



Zachman Framework™

MDG Technology™

MDG Technology For Zachman Framework User Guide

The MDG Technology For Zachman Framework Add-In enables Enterprise Architect users to benefit from the Zachman Framework within a powerful modeling environment that is based on open standards.



© Copyright 2007-2008 Sparx Systems Pty Ltd

MDG Technology For Zachman Framework User Guide

Introduction

by Nithiya Ugavina

The MDG Technology For Zachman Framework Add-In enables Enterprise Architect users to benefit from the Zachman Framework within a powerful modeling environment that is based on open standards.

MDG Technology for Zachman Framework User Guide

© 2007-2008 Sparx Systems Pty Ltd

All rights reserved. No parts of this work may be reproduced in any form or by any means - graphic, electronic, or mechanical, including photocopying, recording, taping, or information storage and retrieval systems - without the written permission of the publisher.

Products that are referred to in this document may be either trademarks and/or registered trademarks of the respective owners. The publisher and the author make no claim to these trademarks.

While every precaution has been taken in the preparation of this document, the publisher and the author assume no responsibility for errors or omissions, or for damages resulting from the use of information contained in this document or from the use of programs and source code that may accompany it. In no event shall the publisher and the author be liable for any loss of profit or any other commercial damage caused or alleged to have been caused directly or indirectly by this document.

Printed: September 2008

Publisher

Sparx Systems

Managing Editor

Geoffrey Sparks

Technical Editors

Ben Constable

Nithiya Ugavina

Special thanks to:

All the people who have contributed suggestions, examples, bug reports and assistance in the development of MDG Technology for Zachman Framework. The task of developing and maintaining this tool has been greatly enhanced by their contribution.

Table of Contents

Foreword	1
Welcome	2
Copyright Notice	3
Software Product License Agreement	4
Acknowledgement of Trademarks	6
Support	7
System Requirements	8
Getting Started	9
Using MDG Technology For Zachman Framework	10
The Zachman Framework Interface Diagram	11
Model Structure	12
Model Template	13
Add-In Menu	14
Diagrams	15
Diagram Types	16
The Zachman Framework Toolbox	17
Business Data Pages	18
Business Process Pages	19
Business Location Pages	19
Business Motivation Pages	20
Organization Chart Pages	21
Business Events Pages	21
Data Map Pages	22
Business Logistics Pages	22
BPMN Pages	23
Event Schedule Pages	25
Strategy Map Pages	25
Data Distribution Architecture Pages	26
Business Rule Model Pages	27
Rule Design Pages	28
Network Architecture Pages	28
Rule Specification Pages	29
Tagged Values	30
Tasks	31
Data Map Analysis	32
Cluster Report	33
Process Map	34
Business Scorecards	36
Model Validation	38
Validation Messages for Elements	40
Validation Messages for Connectors	41
Validation Messages for Diagrams	42
Index	43

Foreword

This user guide provides an introduction to the features contained in the MDG Technology for Zachman Framework.

1 Welcome



Welcome to the *MDG Technology for Zachman Framework – Enterprise Architect Add-In, Version 1.1*.

This Add-In enables Enterprise Architect users to employ the Zachman Framework with the associated benefits of a powerful, open-standard modeling system.

About the Zachman Framework

The Zachman Framework is a widely used approach for engineering Enterprise Architecture. The Framework is a simple, logical structure that helps in organizing the information infrastructure of the Enterprise.

The Zachman Framework, while conceptually simple, provides many benefits in helping align technology with business needs. It has become a popular approach in defining Enterprise Architecture because it:

- Is platform neutral
- Is a powerful planning device
- Is both comprehensive and readily understood by non-technical people
- Assists in problem solving
- Helps in documenting enterprise-wide information system architecture.

Under the Zachman Framework, an Enterprise is modeled by answering six questions: *What? How? Where? Who? When?* and *Why?* with respect to six role perspectives: the *Planner, Owner, Designer, Builder, Subcontractor* and *Functioning Enterprise*.

For further information, visit www.zifa.com.

Getting Started

For instructions on how to start using the MDG Technology for Zachman Framework, see [Getting Started](#)^[9] and [Using MDG Technology for Zachman Framework](#)^[10].

See Also

- [Copyright Notice](#)^[3]
- [Trademarks](#)^[6]
- [Support](#)^[7]
- [License Agreement](#)^[4]
- [System Requirements](#)^[8]

1.1 Copyright Notice

Copyright © 2007-2008 Sparx Systems Pty. Ltd. All rights reserved.

The *MDG Technology for Zachman Framework* software contains proprietary information of Sparx Systems Pty Ltd. It is provided under a license agreement containing restrictions on use and disclosure and is also protected by copyright law. Reverse engineering of the software is prohibited. Please read the [license agreement](#) for full details.

Due to continued product development, this information may change without notice. The information and intellectual property contained herein is confidential between Sparx Systems and the client and remains the exclusive property of Sparx Systems. If you find any problems in the documentation, please report them to us in writing. Sparx Systems does not warrant that this document is error-free. No part of this publication may be reproduced, stored in a retrieval system, or transmitted in any form or by any means, electronic, mechanical, photocopying, recording or otherwise without the prior written permission of Sparx Systems. Licensed users are granted the right to print a single hardcopy of the user manual per licensed copy of the software, but may not sell, distribute or otherwise dispose of the hardcopy without written consent of Sparx Systems.

Sparx Systems Pty. Ltd.

7 Curtis St,
Creswick, Victoria 3363,
AUSTRALIA

Phone: +61 (3) 5345 1140

Fax: +61 (3) 5345 1104

Support Email: support@sparxsystems.com

Sales Email: sales@sparxsystems.com

Website: <http://www.sparxsystems.com>

1.2 Software Product License Agreement

MDG Technology for Zachman Framework - Enterprise Architect MDG Add-In, Version 1.1.

Copyright (C) 2007-2008 Sparx Systems Pty Ltd. All Rights Reserved

IMPORTANT-READ CAREFULLY: This End User Licence Agreement ("EULA") is a legal agreement between YOU as Licensee and SPARX for the SOFTWARE PRODUCT identified above. By installing, copying, or otherwise using the SOFTWARE PRODUCT, YOU agree to be bound by the terms of this EULA.

If YOU do not agree to the terms of this EULA, promptly delete the unused SOFTWARE PRODUCT.

The copyright in the SOFTWARE PRODUCT and its documentation is owned by Sparx Systems Pty Ltd, A.B.N 38 085 034 546. Subject to the terms of this EULA, YOU are granted a non-exclusive right for the duration of the EULA to use and modify the SOFTWARE PRODUCT. YOU do not acquire ownership of copyright or other intellectual property rights in any part of the SOFTWARE PRODUCT by virtue of this EULA.

Your use of this software indicates your acceptance of this EULA and warranty.

DEFINITIONS

In this End User Licence Agreement, unless the contrary intention appears,

"EULA" means this End User Licence Agreement

"SPARX" means Sparx Systems Pty Ltd A.C.N 085 034 546

"Licensee" means YOU, or the organization (if any) on whose behalf YOU are taking the EULA.

"SOFTWARE PRODUCT" or "SOFTWARE" means MDG Technology for Zachman Framework, which includes computer software and associated media and printed materials, and may include online or electronic documentation.

GRANT OF LICENSE

In accordance with the terms of this EULA YOU are granted the following rights:

- a) To install and use ONE copy of the SOFTWARE PRODUCT or, in its place, any prior version for the same operating system, on a single computer. As the primary user of the computer on which the SOFTWARE PRODUCT is installed, YOU may make a second copy for your exclusive use on either a home or portable computer.
- b) To store or install a copy of the SOFTWARE PRODUCT on a storage device, such as a network server, used only to install or run the SOFTWARE PRODUCT over an internal network.
- c) To make copies of the SOFTWARE PRODUCT for backup, archival and instructional purposes.

EVALUATION LICENSE

The Trial Version of MDG Technology for Zachman Framework is not free software. Subject to the terms of this agreement, YOU are hereby licensed to use this software for evaluation purposes without charge for a period of 30 days.

Upon expiration of the 30 days, the SOFTWARE PRODUCT must be removed from the computer. Unregistered use of MDG Technology for Zachman Framework after the 30-day evaluation period is in violation of Australian, U.S. and international copyright laws.

SPARX may extend the evaluation period on request and at their discretion.

If YOU choose to use this software after the 30 day evaluation period a license must be purchased (as described at http://www.sparxsystems.com/ea_purchase.htm). Upon payment of the license fee, YOU will be sent details on where to download the registered edition of MDG Technology for Zachman Framework and will be provided with a suitable software 'key' by email.

ADDITIONAL RIGHTS AND LIMITATIONS

YOU hereby undertake not to sell or sub-licence the SOFTWARE PRODUCT other than as expressly authorized by this EULA.

NO WARRANTY. The SOFTWARE PRODUCT is provided "AS IS" basis, without warranty of any kind, and SPARX expressly disclaims all warranties and/or conditions with respect to the SOFTWARE PRODUCT, either express, implied or statutory, including, but not limited to, the implied warranties and/or conditions of merchantability, of satisfactory quality, of fitness for a particular purpose, of accuracy, of quiet enjoyment, and of non-infringement of third party rights.

LIMITATION

Under no circumstances shall SPARX be liable for any incidental, special, indirect or consequential damages arising out of or relating to this license or YOUR use, reproduction, modification, distribution of the SOFTWARE PRODUCT, or any portion thereof, whether under a theory of contract, warranty, strict liability or otherwise, even if the copyright holder has been advised of the possibility of such damages and notwithstanding the failure of essential purpose of any remedy.

TRADEMARKS

All names of products and companies used in this EULA, the SOFTWARE PRODUCT, or the enclosed documentation may be trademarks of their corresponding owners. Their use in this EULA is intended to be in compliance with the respective guidelines and licenses.

Windows, Windows NT®, Windows ME, Windows XP, Windows Vista, Windows 2000 and Windows 2003 are trademarks of Microsoft®.

The Zachman Framework for Enterprise Architecture™ is a trademark of John A. Zachman and Zachman International.

GOVERNING LAW

This agreement shall be construed in accordance with the laws of the Commonwealth of AUSTRALIA.

1.3 Acknowledgement of Trademarks

Trademarks of Microsoft

- Microsoft Word
- Microsoft Office
- Windows®

Trademarks of the Object Management Group

- Object Management Group™
- OMG™
- UML™
- Unified Modeling Language™

Trademark of John A. Zachman and Zachman International

- The Zachman Framework For Enterprise Architecture™

1.4 Support

Technical support for the MDG Technology for Zachman Framework is available to registered users of Enterprise Architect. Responses to support queries are sent by email. Sparx Systems endeavors to provide a rapid response to all product-related questions or concerns.

Registered users can lodge a support request, by visiting:
http://www.sparxsystems.com/registered/reg_support.html.

Trial users can contact Sparx Systems with questions regarding their evaluation at:
support@sparxsystems.com.

An online user forum is also available for your questions and perusal, at
<http://www.sparxsystems.com/cgi-bin/yabb/YaBB.cgi>.

1.5 System Requirements

MDG Technology for Zachman Framework version 1.1 runs under the following environments:

Operating Systems Supported

- Windows NT® (SP5 or later)
- Windows ME
- Windows 2000 Professional (SP3 or later)
- Windows Vista (32 bit)
- Windows 2003
- Windows XP Professional
- Windows XP Home
- Windows XP Media Edition
- Windows XP Tablet Edition

Enterprise Architect Versions Supported

- Enterprise Architect Professional, Version 7.1 (or later)
- Enterprise Architect Corporate, Version 7.1 (or later)

2 Getting Started

When you install the MDG Technology for Zachman Framework, it is fully enabled and ready to use.

Access the MDG Technology For Zachman Framework

1. Create a new Enterprise Architect project file.
2. From the **Add Model Wizard** select **MDG Technology for Zachman Framework**.
3. From the **Name** panel, select the **Zachman Framework Model**.
4. Click on the **OK** button.

A new base model for the Zachman Framework is created, displaying the [Zachman Interface diagram](#)¹¹.

See Also

- [Using MDG Technology for Zachman Framework](#)¹⁰
- [Model Template](#)¹³

3 Using MDG Technology For Zachman Framework

The MDG Technology for Zachman Framework provides a model-based framework for planning, designing and implementing the Architecture for an Enterprise. The starter model provided with the Add-In acts as a base upon which you can build the Enterprise Architecture. You can create the appropriate diagrams from the extended Enterprise Architect UML diagram set, using **Toolbox** pages that support every cell of the Zachman classification framework.

The Add-In also provides model validation and reporting capabilities for strategic project plans.

Enterprise Architect enables you to choose between **Diagram** view and **Element List** view. **Element List** view can be used in cells where you prefer to define only the model artifacts.

You can also align cells across the framework (horizontally and vertically) through the Enterprise Architect **Relationship Matrix**.

The Enterprise Architect **Tasks Pane** provides a shortcut method of accessing the tasks defined for the Zachman Framework, without searching through the menu options.

For a demonstration of the MDG Technology For Zachman Framework in use, run the video on:

http://sparxsystems.com/resources/demos/ZachmanFramework/Zachman_Framework.htm

This User Guide provides a detailed exploration of the MDG Technology for Zachman Framework tools and features, such as.

- The example Enterprise Architect **model** ^[12] for the Zachman Framework
- UML profiles (**toolbox pages**) ^[17] for use within specific Zachman Framework cells
- A **diagram interface** ^[11] for the Zachman Framework
- New **diagram** ^[15] types specific to the Zachman Framework
- A flexible model **starter-structure** ^[13]
- **Report generation** ^[36] capabilities for strategic project plans
- A Zachman Framework page in the Enterprise Architect **Tasks Pane** ^[31], helping you to perform work specific to the Framework, such as Data Map Analysis.

Note that the MDG Technology For Zachman Framework is integrated with the features of Enterprise Architect, which are documented in the [Enterprise Architect User Guide](#).

3.1 The Zachman Framework Interface Diagram

The Zachman Framework is a predefined model in Enterprise Architect. The model-level diagram of the [model structure](#) ¹²⁴ is the *Zachman Framework Interface* diagram (shown below), which serves as a template for the development of Enterprise Architecture based on the Zachman classification framework.

Each cell links to the relevant Zachman Framework diagram in the child packages in the base model.

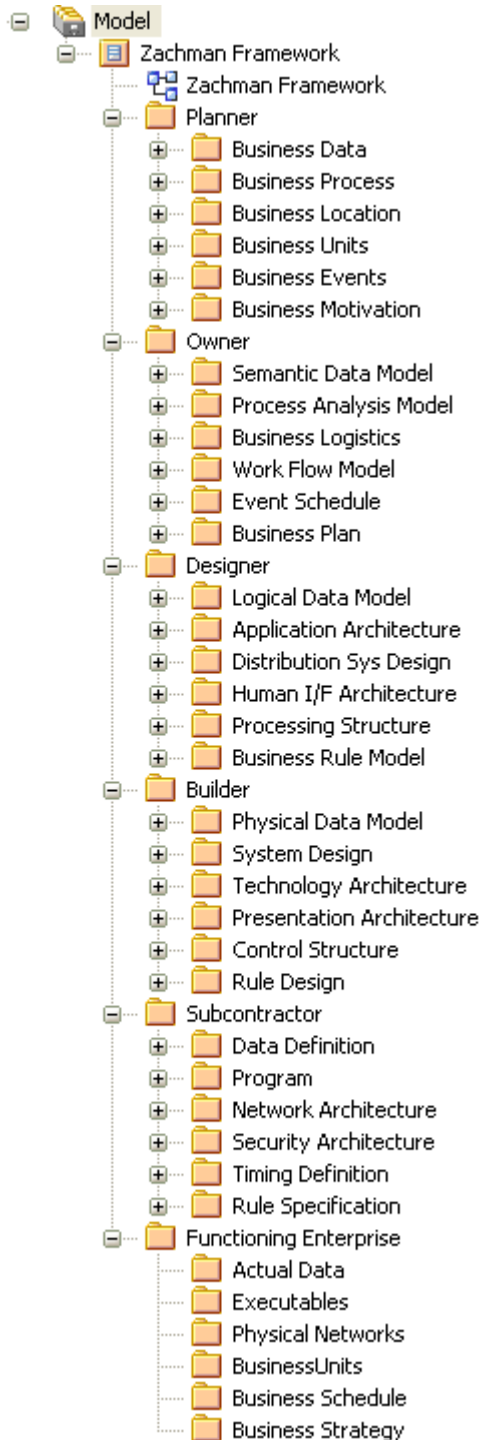
The Zachman Framework Interface Diagram

ZFI Zachman Framework						
The Zachman Framework	DATA What	FUNCTION How	NETWORK Where	PEOPLE Who	TIME When	MOTIVATION Why
SCOPE (Contextual) Planner	Things Important to the Business 	Processes the Business Performs 	Locations in which the Business Operates 	Organizations Important to the Business 	Events/Cycles Significant to the Business 	Business Goals/Strategies
BUSINESS MODEL (Conceptual) Owner	Conceptual Data Model 	Business Process Model 	Business Logistics 	Work Flow Model 	Master Schedule 	Business Plan
SYSTEM MODEL (Logical) Designer	Logical Data Model 	Application Architecture 	Distributed System Architecture 	Human Interface Architecture 	Processing Structure 	Business Rule Model
TECHNOLOGY MODEL (Physical) Builder	Physical Data Model 	System Design 	Technology Architecture 	Presentation Architecture 	Control Structure 	Rule Design
DETAILED REPRESENTATIONS Sub-Contractor	Data Definition 	Program 	Network Architecture 	Security Architecture 	Timing Definition 	Rule Specification
FUNCTIONING ENTERPRISE	Data 	Function 	Network 	Organization Units 	Schedule 	Strategy

3.2 Model Structure

This topic defines the structure of the Zachman Framework model template.

Each Zachman Perspective (or row) is modeled as the highest-level package inside the Framework model. Cells belonging to the Perspectives are modeled as child packages to the respective row package.

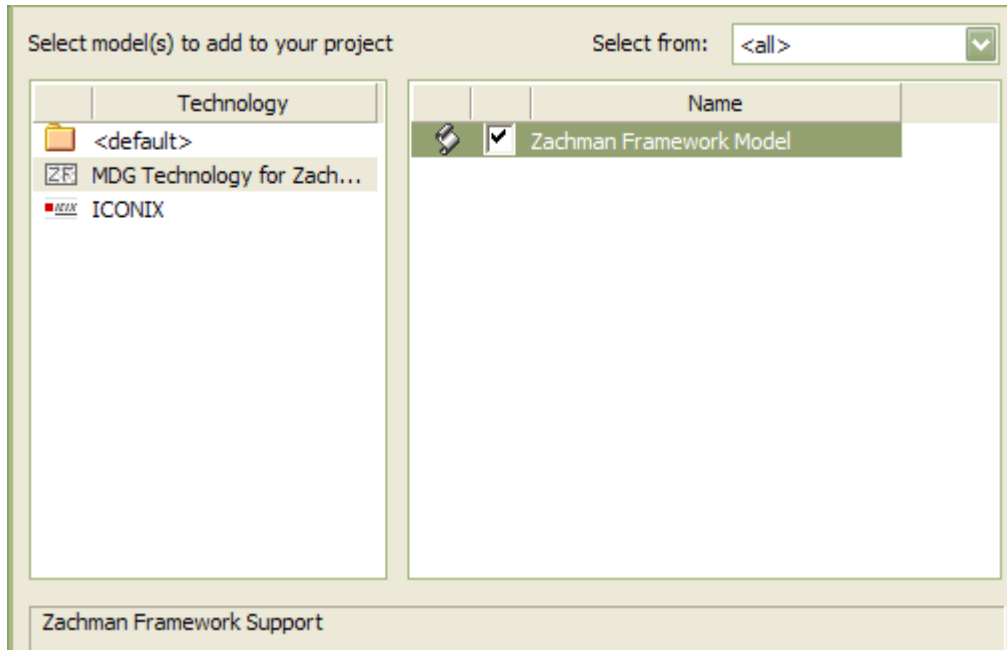


3.3 Model Template

The Zachman Framework Model Template provides the model skeleton from which you can develop your Enterprise definition.

To add a new Zachman Framework model to the project:

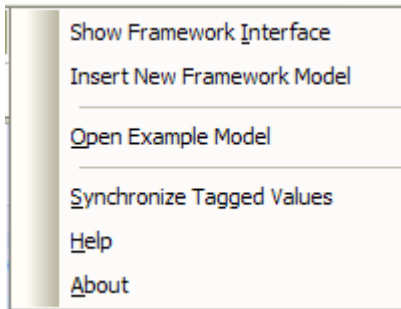
1. Right-click on the root node and select the **Add Model using Wizard** context menu option. The **Select model(s)** dialog displays.



2. Select **MDG Technology for Zachman Framework** from the **Technology** pane.
3. Select the **Zachman Framework** model.
4. Click on the **OK** button.

3.4 Add-In Menu

The **Zachman Framework Technology** sub-menu is available from the **Add-Ins** menu on the main menu bar.



Menu Option	Use to
Show Framework Interface	Open the Zachman Framework interface diagram.
Insert New Framework Model	Create a new Zachman Framework template model under the selected package.
Open Example Model	Load the example Zachman Framework model.
Synchronize Tagged Values	<p>Add missing Tagged Values to all elements in the model that require them.</p> <p>Select this option whenever a new element is created by any means other than directly dropping the element from the Zachman Framework Toolbox pages. Also select this option before using a new version of the Add-In, to update the Tagged Values of elements in existing models to the latest version of the Zachman Framework profile.</p> <p>See Synchronize Tags And Constraints in the <i>Enterprise Architect User Guide</i>.</p>
Help	Displays the MDG Technology for Zachman Framework Help.
About	Displays the version information for the MDG Technology for Zachman Framework.

Tip:

If either the **Add-Ins** menu or the **Zachman Framework Technology** sub-menu is not visible after installing the Zachman Framework Add-In, try:

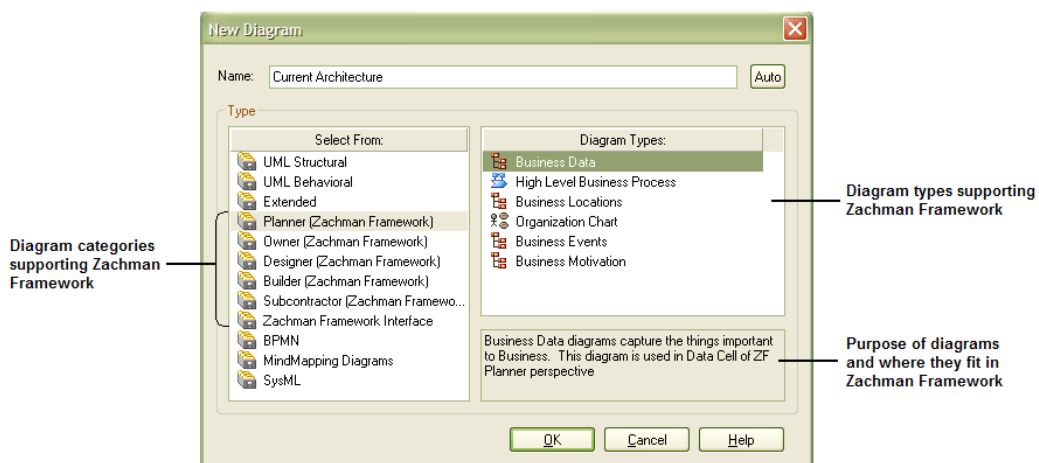
- Selecting the **Add-Ins | Manage Add-Ins** menu option and ensuring that you have selected the **Zachman Framework Load on Startup** checkbox on the **Manage Add-Ins** dialog.
- Resetting Enterprise Architect's menus with the **View | Visual Layouts | Default Layout** menu option.

3.5 Diagrams

The MDG Technology introduces new [diagram types](#) that support modeling of the Zachman Classification Framework. A Zachman Framework diagram is created in the same way as any other diagram in Enterprise Architect; see the [Enterprise Architect User Guide](#) for further details.

Loading the Zachman Framework Add-In provides access to the following *categories* of diagram through the **New Diagram** dialog:

- Planner
- Owner
- Designer
- Builder
- Subcontractor
- Zachman Framework Interface.



3.6 Diagram Types

The MDG Technology for Zachman Framework further extends the Enterprise Architect diagram set to support the Framework. The following illustration shows the diagram types appropriate to each cell of the Zachman Framework.

ZFI Zachman Framework						
<i>The Zachman Framework</i>	What Data	How Function	Where Location	Who People	When Time	Why Future
Planner Objective/Scope	Business Data	High Level Business Process	Business Locations	Organization Chart	Business Events	Business Motivation
Owner Conceptual	Data Map Add-In Generated Process Map	Process Analysis	Business Logistics	BPMN	Event Schedule	Strategy Map Mind Mapping
Designer Logical	Class - (Platform Independent Model)	Activity	Data Distribution Architecture	Use Case	State Transition	Business Rule Model Requirements
Builder Physical	Physical Data Model	Class - (Platform Specific Model) Component	Deployment	User Interface	Interaction Communication	Rule Design
Sub- Constructor Out-of-Context	Data Definition Enterprise Architect DDL Generation	Enterprise Architect Code Generation	Network Architecture	Security Architecture	Timing	Rule Specification
FUNCTIONING ENTERPRISE						

Legend	
■	UML Diagrams
■	UML Profile for Zachman Framework
■	Enterprise Architect extension

3.7 The Zachman Framework Toolbox

The Zachman Framework pages of the Enterprise Architect UML **Toolbox** provide elements and relationships for all the Zachman Framework diagrams that the MDG Technology supports.

The Zachman Framework **Toolbox** pages can be accessed using the **More tools | Zachman Framework** menu option. They can be docked on either side of the diagram, or free floated on top of the diagram to expose more surface for editing.

The following table shows, for each Zachman Framework cell, the diagram that could be used and its associated Enterprise Architect UML **Toolbox** page.

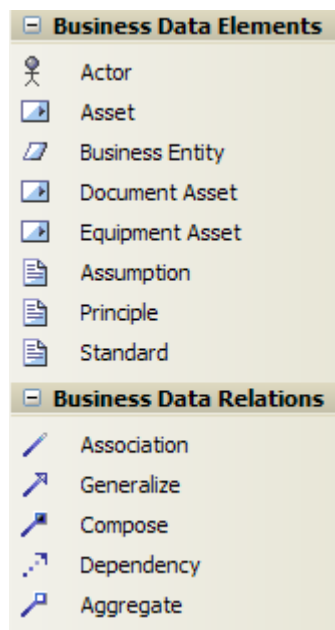
Zachman Cell	Diagram	Toolbox Page
Planner-Data	Business Data	Business Data ^[18]
Planner – Function	Business Process	Business Process ^[19]
Planner - Location	Business Locations	Business Locations ^[19]
Planner - People	Organization Chart	Organization Chart ^[21]
Planner - Timing	Business Events	Business Events ^[21]
Planner - Motivation	Business Motivation	Business Motivation ^[20]
Owner - Data	Data Map Process Map -Generated by Add-In	Data Map ^[22]
Owner – Function	Process Analysis	Enterprise Architect Extended - Analysis*
Owner - Location	Business Logistics	Business Logistics ^[22]
Owner - People	BPMN	BPMN ^[23]
Owner - Timing	Event Schedule	Event Schedule ^[25]
Owner - Motivation	Strategy Map Enterprise Architect - Mind Mapping diagram	<ul style="list-style-type: none"> • Strategy Map ^[25] • Enterprise Architect - Mind Mapping
Designer - Data	Class	UML - Class*
Designer – Function	Activity	UML Activity*
Designer - Location	Data Distribution Architecture	Data Distribution Architecture ^[26]
Designer - People	Use Case	UML - Use Case*
Designer - Timing	State Transition	UML - State*
Designer - Motivation	Business Rule Model	Business Rule Model ^[27]
Builder - Data	Physical Data Model	Enterprise Architect Extended - Data Modeling*
Builder – Function	Class Component	UML - Class* UML - Component*
Builder - Location	Deployment	UML - Deployment*
Builder - People	User Interface	Enterprise Architect Extended - User Interface*
Builder - Timing	Interaction Communication	UML - Interaction* UML - Communication*
Builder - Motivation	Rule Design	Rule Design ^[28]
Subcontractor - Data	Data Definition	No toolbox defined. Default toolbox for the diagram is Enterprise Architect Extended - Custom*

Zachman Cell	Diagram	Toolbox Page
Subcontractor – Function	No diagram defined – Code generation is done in this cell.	Not Applicable
Subcontractor - Location	Network Architecture	Network Architecture ^[28]
Subcontractor - People	Security Architecture	UML - Class*
Subcontractor - Timing	Timing	UML - Timing*
Subcontractor - Motivation	Rule Specification	Rule Specification ^[29]

Note:

Links marked with an asterisk (*) display information from the *Enterprise Architect User Guide*.

3.7.1 Business Data Pages

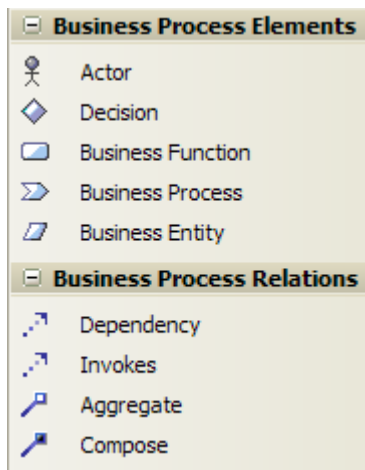


Item	Description
Actor	Used to model a stakeholder or any other human resource of the enterprise.
Asset	Captures the enterprise resources that could be estimated for value.
Business Entity	Generic element to capture enterprise resources.
Document Asset	Subtype of Asset to capture the important documents of the enterprise.
Equipment Asset	Subtype of Asset to capture the equipment resources of the enterprise.
Assumption	Used to capture the assumptions made in information manipulation. Tag Value Type = <i>Enterprise / Business / System / Application / Technology / Data</i> .
Principle	Used to define the principles framed and followed in the Enterprise. Tag Value Type = <i>Enterprise / Business / System / Application / Technology / Data</i> .
Standard	Used to define the standards followed in the Enterprise. Tag Value Type = <i>Enterprise / Business / System / Application / Technology / Data</i> .

Note:

Elements and connectors common to Enterprise Architect UML and Extended diagrams are not documented here. See the [Enterprise Architect User Guide](#) for information on these.

3.7.2 Business Process Pages



Item	Description
Actor	Used to model a stakeholder or any other human resource of the Enterprise.
Decision	Indicates point of conditional progression where a business decision is taken.
Business Function	A major function performed by the Enterprise or a part of the Enterprise.
Business Process	A function or behavior of the Enterprise or part of the Enterprise.
Business Entity	Generic element to capture Enterprise resources.
Invokes	Relationship that defines the invocation of a business process.

Note:

Elements and connectors common to Enterprise Architect UML and Extended diagrams are not documented here. See the [Enterprise Architect User Guide](#) for information on these.

3.7.3 Business Location Pages



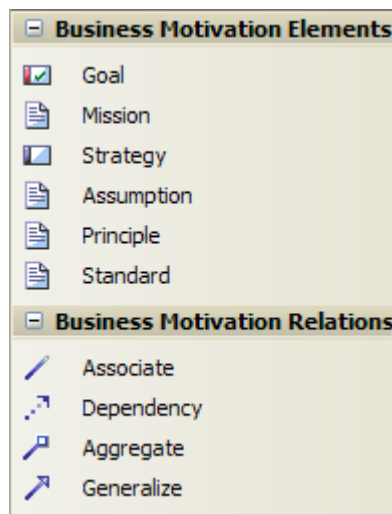
Item	Description
Branch Office	Subtype of Business Location.
Client Place	Subtype of Business Location.
Head Quarters	Subtype of Business Location.

Item	Description
Business Location	Models the location from which the business operates.
Office Block	Subtype of Business Location.
Sales Agent	Subtype of Business Location.
Supplier	Subtype of Business Location.

Note:

Elements and connectors common to Enterprise Architect UML and Extended diagrams are not documented here. See the [Enterprise Architect User Guide](#) for information on these.

3.7.4 Business Motivation Pages



Item	Description
Goal	Element to capture what is to be achieved by the enterprise, with specifications defined by the Tagged Values.
Mission	Element to capture the mission statement, policies and values of the enterprise.
Strategy	Element to capture the strategy statements for the business plan.
Assumption	Used to capture the assumptions made in information manipulation. Tag Value Type = <i>Enterprise / Business / System / Application / Technology / Data</i> .
Principle	Used to define the principles framed and followed in the Enterprise. Tag Value Type = <i>Enterprise / Business / System / Application / Technology / Data</i> .
Standard	Used to define the standards followed in the Enterprise. Tag Value Type = <i>Enterprise / Business / System / Application / Technology / Data</i> .

Note:

Elements and connectors common to Enterprise Architect UML and Extended diagrams are not documented here. See the [Enterprise Architect User Guide](#) for information on these.

3.7.5 Organization Chart Pages

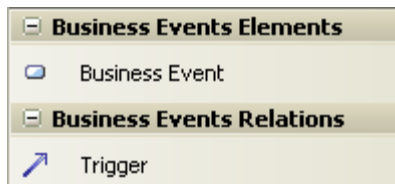


Item	Description
Board of Directors	Element to capture the details of the board of directors.
StakeHolder	Element to capture stakeholders of the enterprise.
External Organization	Element to capture any external business unit that is not under direct control of the enterprise, but has a relationship with the enterprise.
Organization Unit	Element to capture any business unit that is under direct control of the enterprise.
Personnel	Element to capture the details of personnel in an enterprise.
In Contract	Connector to capture the contract-based relationships between business units.
Works For	Connector to capture the details of team links; for example, <i>Stakeholder 1</i> works for <i>Organization Unit 1</i> .
Supervise	Connector to capture process supervision details.
Control	Connector to capture <i>Unit in charge</i> or <i>Person in charge</i> information.

Note:

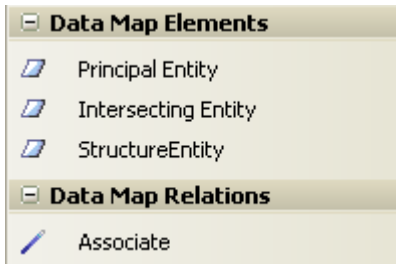
Elements and connectors common to Enterprise Architect UML and Extended diagrams are not documented here. See the [Enterprise Architect User Guide](#) for information on these.

3.7.6 Business Events Pages



Item	Description
Business Event	Element to capture major business events of the enterprise.
Trigger	Used to indicate that a Business Event triggers another event or a business process.

3.7.7 Data Map Pages

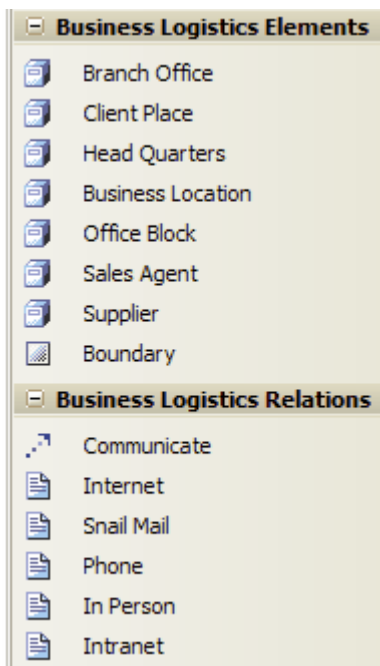


Item	Description
Principal Entity	A business entity that forms a resource of the enterprise.
Intersecting Entity	Normalizes the many-to-many relationship between principal entities.
Structure Entity	Captures potential knowledge base entities.

Note:

Elements and connectors common to Enterprise Architect UML and Extended diagrams are not documented here. See the [Enterprise Architect User Guide](#) for information on these.

3.7.8 Business Logistics Pages



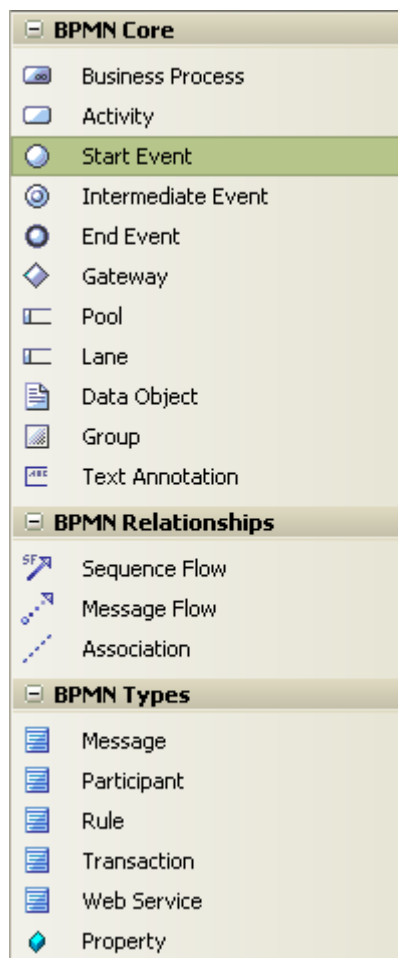
Item	Description
Branch Office	Subtype of Business Location.
Client Place	Subtype of Business Location.
Head Quarters	Subtype of Business Location.
Business Location	Models the location from which the business operates.
Office Block	Subtype of Business Location.

Item	Description
Sales Agent	Subtype of Business Location.
Supplier	Subtype of Business Location.
Communicate	Indicates that a business location communicates directly with another business location.
Internet	Indicates that the means of communication is the World Wide Web.
Snail Mail	Indicates that the means of communication is the postal system or courier services.
Phone	Indicates that the means of communication is the telephone.
In Person	Indicates that the means of communication is direct person-to-person.
Intranet	Indicates that the means of communication is the local intranet or WAN.

Note:

Elements and connectors common to Enterprise Architect UML and Extended diagrams are not documented here. See the [Enterprise Architect User Guide](#) for information on these.

3.7.9 BPMN Pages



The **BPMN Toolbox** pages provide the graphical (Core) and non-graphical (Types) Business Process Modeling Notation (BPMN) elements for use on business process diagrams. Specifications of these elements and relationships are defined by Tagged Values.

Item	Description
Business Process	An extension of a <i>composite Activity</i> that defines a business process.
Activity	Defines an activity within a business process.
Start Event	Defines the initiating event in a process.
Intermediate Event	Defines an intermediate event in a process.
End Event	Defines the terminating event in a process.
Gateway	Defines a decision point in a business process. If a condition is true, then processing continues one way; if not, then another.
Pool	An extension of a <i>Partition</i> element, used to logically organize an Activity.
Lane	An extension of a <i>Partition</i> element, used to subdivide a Pool.
Data Object	An extension of an <i>Artifact</i> element, used to define a physical piece of information used or produced by a system.
Group	An extension of a <i>Boundary</i> element, used to group other elements.
Text Annotation	A comment.
Sequence Flow	An extension of a <i>Control Flow</i> relationship, defining the flow of activity.
Message Flow	An extension of a <i>Control Flow</i> relationship, defining the flow of communications in the process.
Association	Used to associate information and artifacts with flow objects.
Message	An extension of a Class element, used to define a message.
Participant	An extension of a Class element, used to define a participant in an activity.
Rule	An extension of a Class element, used to define rule statements.
Transaction	An extension of a Class element, used to define a transaction in an activity.
Web Service	An extension of a Class element, used to define a web service.
Property	An extension of an attribute, to drag onto another element.

Note:

Enterprise Architect is delivered with BPMN Technology automatically installed. This provides a BPMN profile and **Toolbox** separate from the Zachman version above. To make even further use of BPMN facilities, download the BPMN Add-In from:

http://www.sparxsystems.com/products/mdg_bpmn.html

3.7.10 Event Schedule Pages



Item	Description
Business Event	Element to capture major business events of the enterprise.
Business Cycle	Element to capture major business cycles of the enterprise.
Event Node	Element to capture the event points in a business cycle.

Note:

Elements and connectors common to Enterprise Architect UML and Extended diagrams are not documented here. See the [Enterprise Architect User Guide](#) for information on these.

3.7.11 Strategy Map Pages

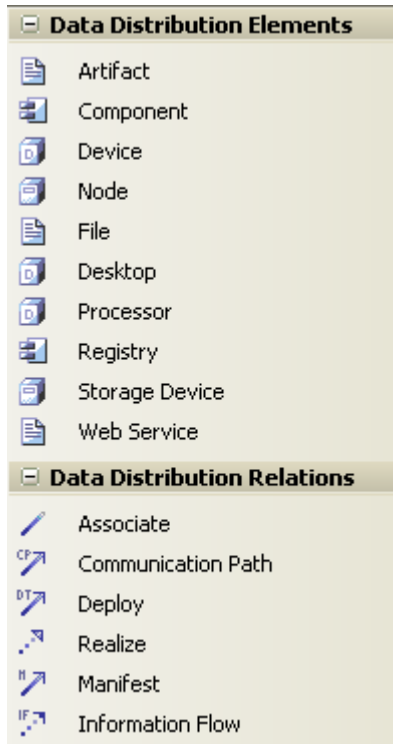


Item	Description
Strategy	Element to capture the strategy statements for the business plan.
Goal	Element to capture what is to be achieved by the enterprise with specifications defined by the Tagged Values.
Business Perspective	Element to relate the strategies to a specific category.
Strategy Link	Connector to indicate that a strategy is linked to another strategy or goal.

See Also

- [Business Scorecards](#) ³⁶

3.7.12 Data Distribution Architecture Pages



Item	Description
File	Element to represent a file.
Desktop	Element to represent a desktop.
Processor	Element to represent a processor.
Registry	Element to represent a registry.
Storage Device	Element to represent a storage device.
Web Service	Element to represent a web service.

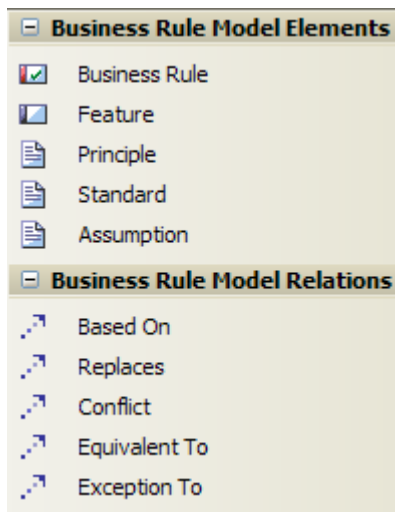
Note:

Elements and connectors common to Enterprise Architect UML and Extended diagrams are not documented here. See the [Enterprise Architect User Guide](#) for information on these.

See Also

- [Deployment Pages](#) in the *Enterprise Architect User Guide*

3.7.13 Business Rule Model Pages

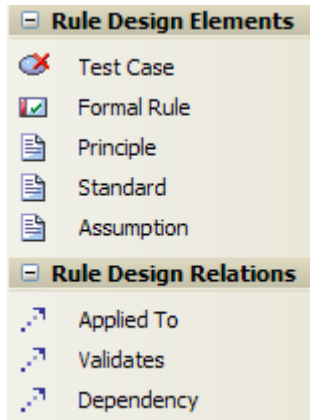


Item	Description
Business Rule	Element to capture the Business Rule statements.
Principle	Used to define the principles framed and followed in the Enterprise. Tag Value Type = <i>Enterprise / Business / System / Application / Technology / Data</i> .
Standard	Used to define the standards followed in the Enterprise. Tag Value Type = <i>Enterprise / Business / System / Application / Technology / Data</i> .
Assumption	Used to capture the assumptions made in information manipulation. Tag Value Type = <i>Enterprise / Business / System / Application / Technology / Data</i> .
Based On	Indicates that a rule is based on another model element, which forms the rationale for the rule.
Replaces	Indicates that a new rule replaces another rule.
Conflict	Indicates that a rule conflicts with another defined rule.
Equivalent To	Indicates that a rule is equivalent to another rule.
Exception To	Indicates exceptions for a rule.

Note:

Elements and connectors common to Enterprise Architect UML and Extended diagrams are not documented here. See the [Enterprise Architect User Guide](#) for information on these.

3.7.14 Rule Design Pages



Item	Description
Formal Rule	A business rule transformed to a technology-specific logical rule or constraint statement.
Principle	Used to define the Principles framed and followed in the Enterprise. Tag Value Type = <i>Enterprise / Business / System / Application / Technology / Data</i> .
Standard	Used to define the Standards followed in the Enterprise. Tag Value Type = <i>Enterprise / Business / System / Application / Technology / Data</i> .
Assumption	Used to capture the assumptions made in information manipulation. Tag Value Type = <i>Enterprise / Business / System / Application / Technology / Data</i> .
Applied To	Indicates that a Formal Rule is applied to other model artifacts such as Scenarios or Activities.
Validates	Indicates that a model artifact validates a Formal Rule.

Note:

Elements and connectors common to Enterprise Architect UML and Extended diagrams are not documented here. See the [Enterprise Architect User Guide](#) for information on these.

3.7.15 Network Architecture Pages

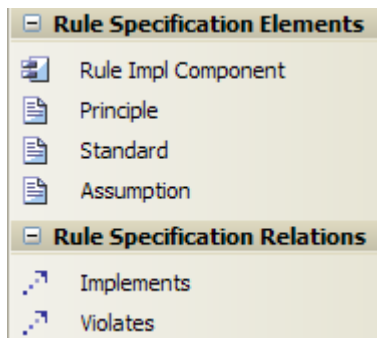


Note:

For further information on the two elements, see the [Enterprise Architect User Guide](#).

Item	Description
Artifact	Generic graphical element used to capture information.
Document Artifact	Generic graphical element used to capture detailed information such as network configuration details.

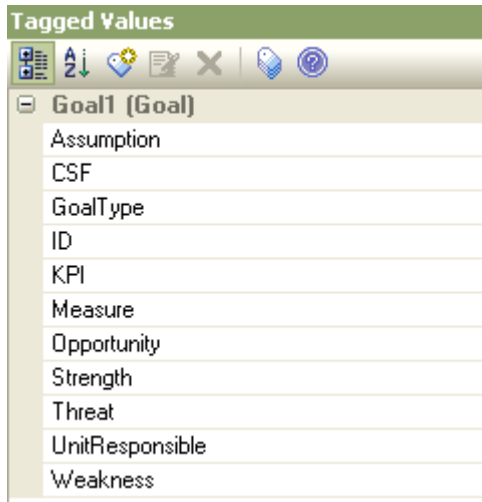
3.7.16 Rule Specification Pages



Item	Description
Rule Impl Component	Element to capture the component implementing a rule.
Principle	Used to define the Principles framed and followed in the Enterprise. Tag Value Type = <i>Enterprise / Business / System / Application / Technology / Data</i> .
Standard	Used to define the Standards followed in the Enterprise. Tag Value Type = <i>Enterprise / Business / System / Application / Technology / Data</i> .
Assumption	Used to capture the assumptions made in information manipulation. Tag Value Type = <i>Enterprise / Business / System / Application / Technology / Data</i> .
Implements	Indicates that a <i>Rule Impl Component</i> implements a rule.
Violates	Indicates that the rule is violated by the connecting model element.

3.8 Tagged Values

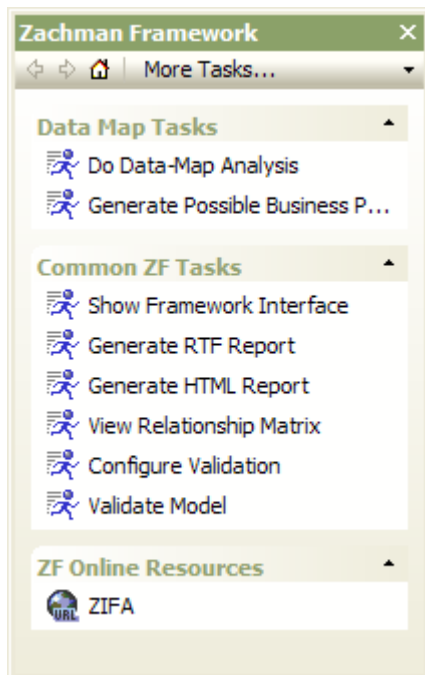
The MDG Technology makes extensive use of Tagged Values to assign custom properties to the various Zachman Framework elements. It is recommended that you keep the **Tagged Values** window docked and visible at all times when creating or viewing a Zachman Framework model.



To open the **Tagged Values** window, select the **View | Tagged Values** menu option or press **[Ctrl]+[Shift]+[6]**. For more information on the **Tagged Values** window, see the [Enterprise Architect User Guide](#).

3.9 Tasks

When the MDG Technology for Zachman Framework is loaded, the Enterprise Architect [Tasks Pane](#) provides a page of Zachman Framework tasks.



The common Zachman Framework tasks are .

Item	Description
Data Map Tasks	<i>This group of commands is functional only when a Data Map diagram is open and active.</i>
Do Data-Map Analysis ^[32]	Invokes the Technology functionality to analyze the Data Map diagram. This task generates Cluster Reports ^[33] and Process Maps ^[34] from a valid Data Map diagram.
Generate Possible Business Process	Invokes the Add-In functionality to identify and generate possible business processes from a valid Data Map diagram, in the same package as the diagram.
Common ZF Tasks	<i>This group of commands is functional for all the cells of the Framework.</i>
Show Framework Interface	Opens the Zachman Framework Interface diagram ^[11] . When there are several framework models in a project, a list of available framework diagrams displays. You can select the required diagram from this list.
Generate RTF Report	Invokes the Enterprise Architect RTF report generation functionality .
Generate HTML Report	Invokes the Enterprise Architect Generate HTML Report dialog .
View Relationship Matrix	Opens the Enterprise Architect Relationship Matrix .
Configure Validation ^[38]	Opens the Enterprise Architect Model Validation Configuration dialog.
Validate Model ^[38]	Validates the model against the configured rules.
ZF Online Resources	<i>This group of options provides links to online resources.</i>
ZIFA	Link to the Zachman Framework For Enterprise Architecture™ website.

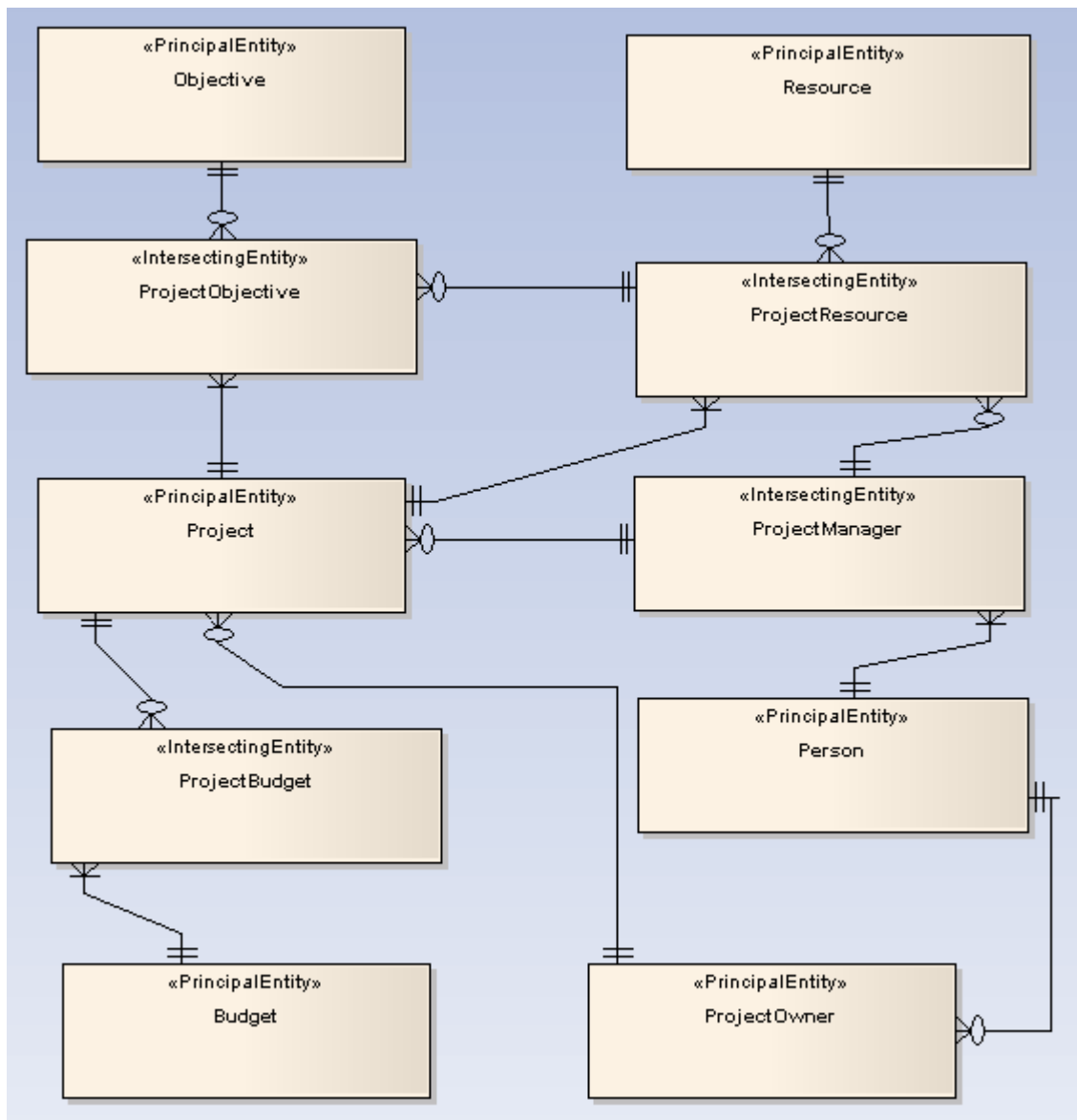
3.9.1 Data Map Analysis

Introduction

[Cluster Reports](#)^[33] and [Process Maps](#)^[34] are deliverables of a valid Data Map diagram analysis. A valid Data Map diagram is basically an Entity Relationship diagram constructed using *Principal Entity*, *Structure Entity* and *Intersecting Entity* elements. The relationships between them are defined by the business rules.

- Principal Entities are identified from the Business Entities in scope
- Intersecting Entities are used to break a many-to-many association between Principal Entities, which form potential business processes
- Structure Entities represent the existence of a potential knowledge base.

An example of a valid Data Map diagram is provided below:



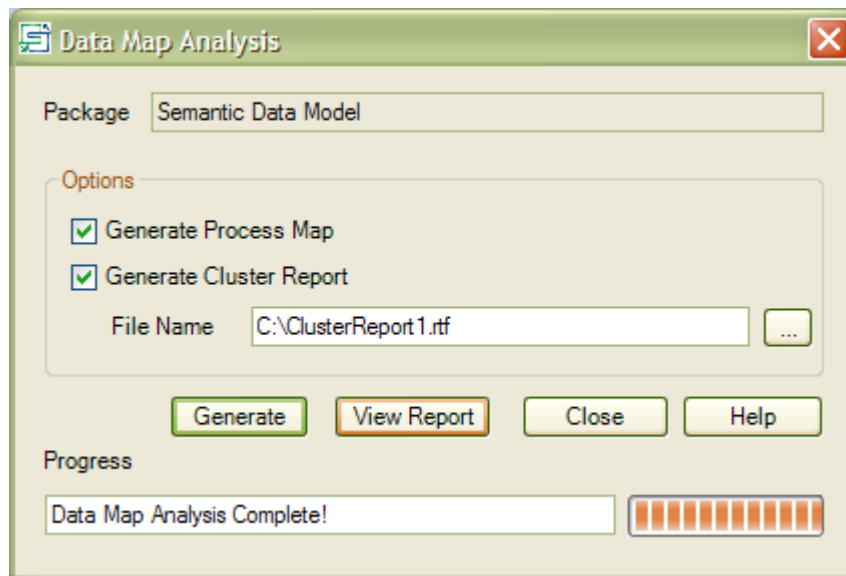
Procedure

To perform a Data Map diagram analysis, select any one of the options below, with the Data Map diagram to be analysed open and active:

- Select the **Add-Ins | Zachman Framework | Do Data-Map Analysis** main menu option
- Right-click on the Data Map diagram in the Enterprise Architect **Project Browser**, and select the **Add-Ins | Zachman Framework | Do Data-Map Analysis** context menu option.

- Select the command from the Enterprise Architect [Tasks Pane](#) ^[31] ([Data Map Tasks](#) | **Do Data-Map Analysis**).

The [Data Map Analysis](#) dialog displays.

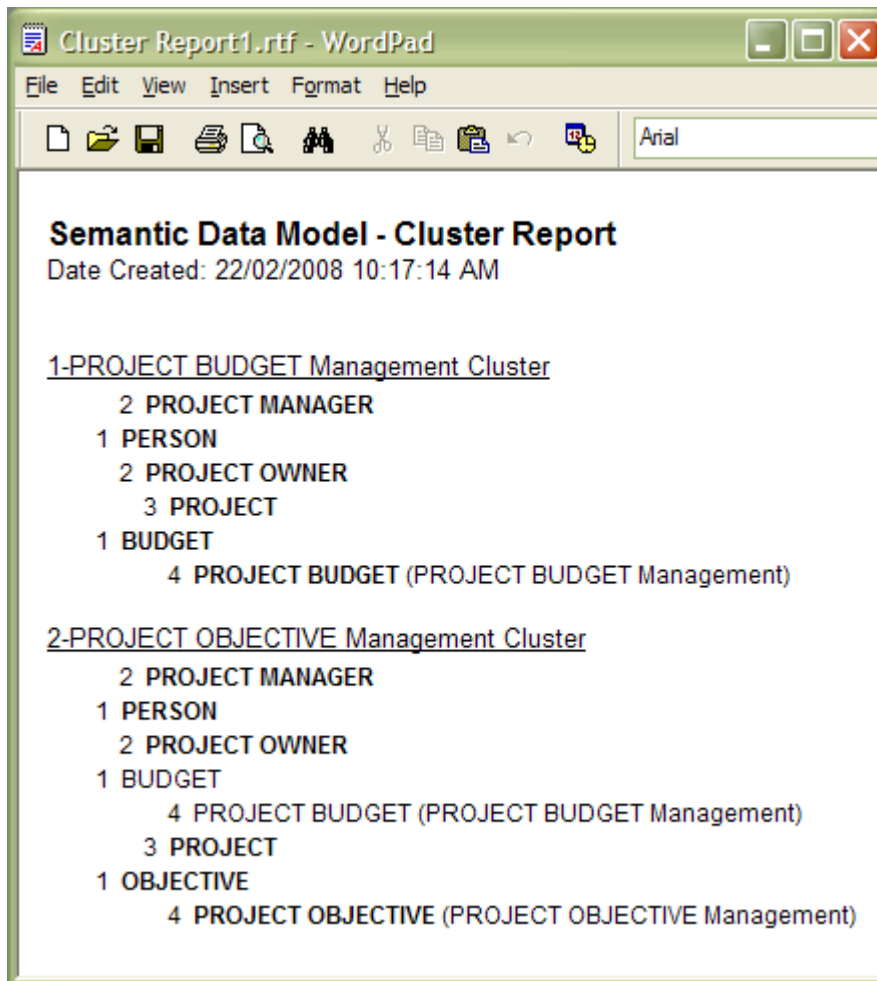


Click on the checkbox against each deliverable required. If you have selected **Generate Cluster Report**, also enter the file pathname under which to save the report. Click on the **Generate** button.

3.9.2 Cluster Report

A cluster is a logically related group of processes arranged in a sequence, this being the plan of the order of the execution of processes.

The following is a *Cluster Report* generated for the [sample Data Map diagram](#) ^[32].



The report shows how each cluster is a logical group of processes or tasks forming a major business process.

The number preceding each entity name is the phase number for the entity. Phase 1 against an entity means that the entity forms a potential resource/element that must be procured/framed before proceeding with the business process.

Entities with phase numbers greater than one are potential processes, with their sequence of execution set after procuring/framing the phase 1 entities in the cluster.

After successful completion of Data Map analysis, the phase property of each entity in the Data Map diagram is set accordingly.

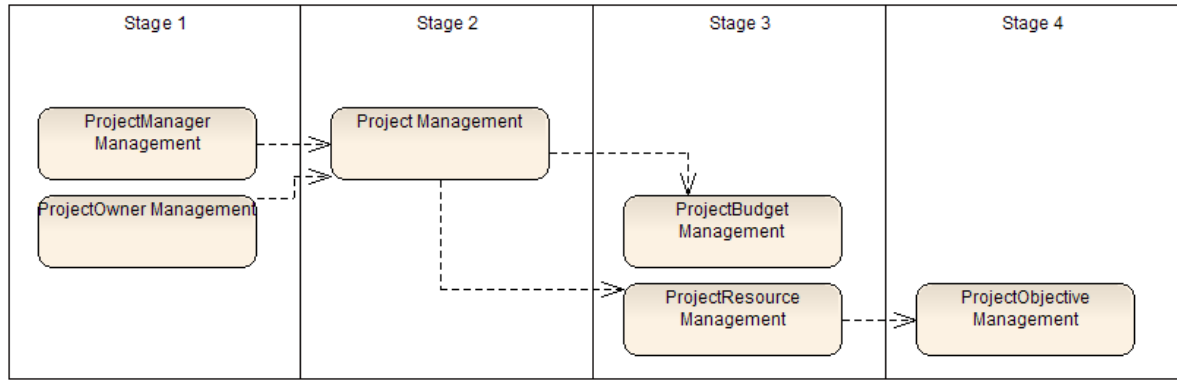
Acknowledgement:

The algorithm for Cluster Report generation is derived from the book *Enterprise Architecture for Integration: Rapid Delivery Methods and Technologies* (Clive Finkelstein; April 2006).

3.9.3 Process Map

A *Process Map* is the visual model of the [Cluster Report](#)^[33]; however, the Phase 1 entities in the Cluster Report are not shown. The Process Map groups the identified Business Processes into the stages of the project, arranged as a guide for the project.

Below is the Process Map generated for the [sample Data Map diagram](#)^[32].



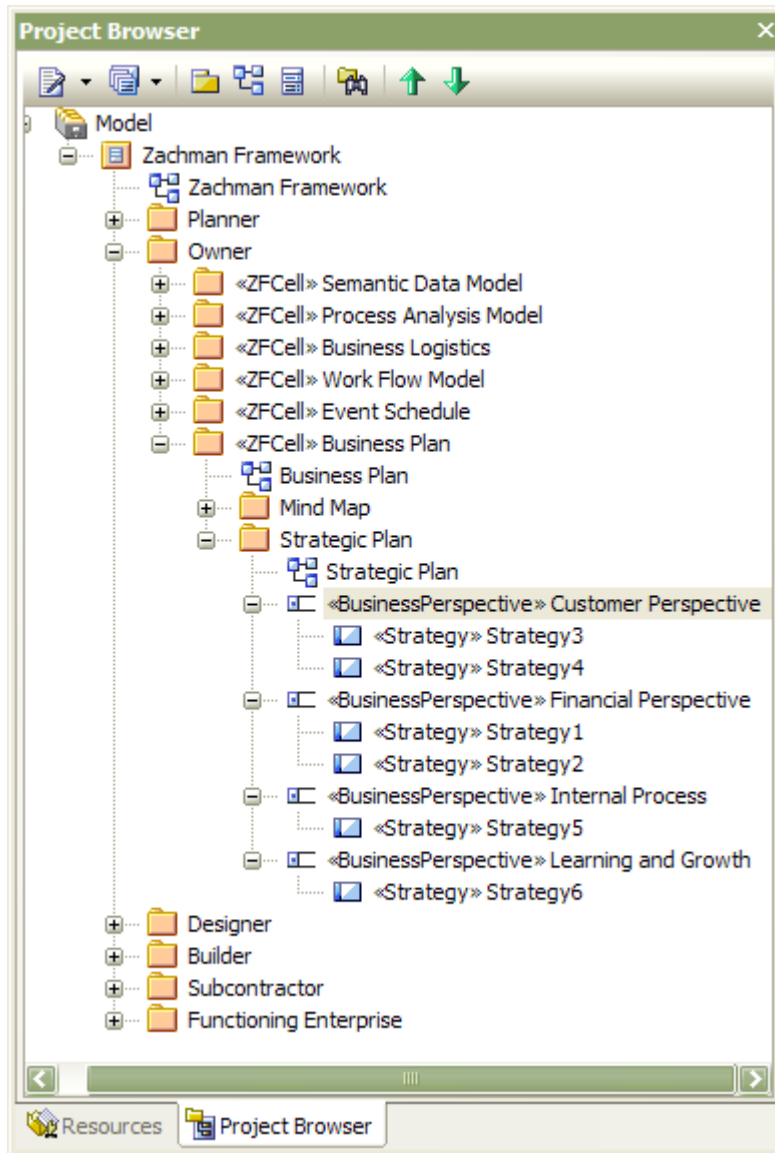
3.10 Business Scorecards

To aid your strategic management methods, MDG Technology for Zachman Framework provides a report template for creating Business Scorecards.

Procedure:

To generate a Business Scorecard, follow the steps below:

1. In the **Project Browser**, click on the package containing your Business Perspectives and Strategies (an *Owner | Business Plan | Strategic Plan* package).



Note:

The Business Perspectives must own the respective strategies, as shown above.

2. Either:
 - Press **[F8]**
 - Select the **Project | Documentation | Rich Text Format (RTF) Report** context menu option
 - Right-click on the package and select the **Documentation | Rich Text Format (RTF) Report** context menu option, or
 - Open the **Tasks Pane** and, in the **Common Tasks** panel, select the **Generate RTF Report** option.

The **Generate RTF Documentation** dialog displays.

3. In the **Use Template** field, click on the drop-down arrow and select **Balanced Score Card**.
4. Click on the **Generate** button.

Note:

For an introduction to generating RTF documentation, see the [RTF Documentation](#) topic in the *Enterprise Architect User Guide*.

4 Model Validation

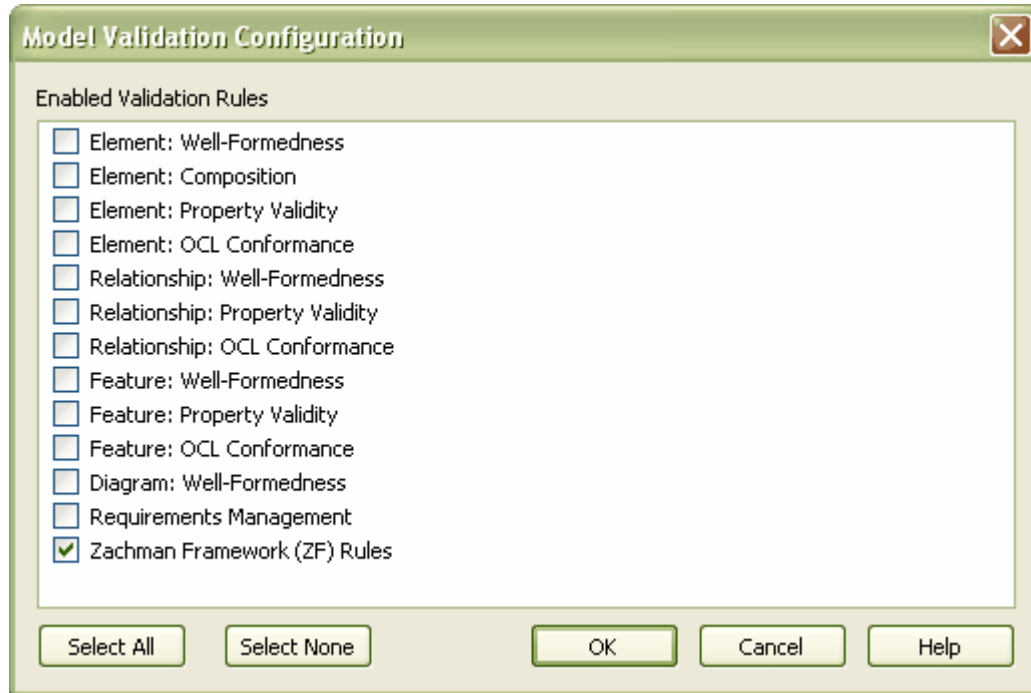
Configure Model Validation

The Zachman Framework Add-In registers with Enterprise Architect to receive model validation requests from users.

To configure Enterprise Architect to perform Zachman Framework model validation, select the:

- **Project | Model Validation | Configure** main menu option, or the
- **Configure Validation** task from the **Zachman Framework - ZF Tasks** page of the **Tasks Pane**.

The **Model Validation Configuration** dialog displays.



To perform validation on Zachman Framework models only, click on the **Select None** button and then click on the checkbox for **Zachman Framework (ZF) Rules**. Click on the **OK** button.

Validate Zachman Framework Model

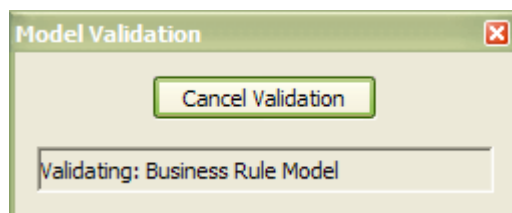
You can validate, against the Zachman Framework rules:

- an element and any connectors attached to it
- a diagram and all its elements, or
- a package and all its diagrams and elements.

To do this, click on the element, diagram or package and then select the:

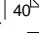
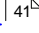
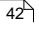
- **Project | Model Validation | Validate Selected** main menu option, or
- **Validate Model** task from the **Zachman Framework - ZF Tasks** page of the **Tasks Pane**.

The **Model Validation** status dialog displays, showing the progress of the validation.



Validation Error Messages

For an explanation of any error messages that might display during validation, see the following topics:

- [Validation Messages for Elements](#) 
- [Validation Messages for Connectors](#) 
- [Validation Messages for Diagrams](#) 

Note:

A Zachman Framework model might trigger additional UML validation error messages; for more information on UML Model Validation, see the [Enterprise Architect User Guide](#).

4.1 Validation Messages for Elements

The following error messages could be output by the validation of a Zachman Framework element.

Element	Diagram	Message	Meaning
Event Node	Event Schedule	<i>Event Nodes must be used only with Business Cycles</i>	An Event Node has been used with elements other than Business Cycle.
Event Node	Event Schedule	<i>Message triggered Event Node must have a message defined</i>	An Event Node with the <i>Trigger</i> Tagged Value set to <i>Message</i> does not have the <i>MessageDetail</i> Tagged Value set.
Event Node	Event Schedule	<i>Rule triggered Event Node must have Rule defined</i>	An Event Node with the <i>Trigger</i> Tagged Value set to <i>Rule</i> does not have the <i>Rule</i> Tagged Value set.
Event Node	Event Schedule	<i>Error triggered Event Node must have the Error defined</i>	An Event Node with the <i>Trigger</i> Tagged Value set to <i>ErrorDetail</i> does not have the <i>Error</i> Tagged Value set.
Event Node	Event Schedule	<i>Multiple triggered Event Node must have a defined list of Triggers</i>	An Event Node with the <i>Trigger</i> Tagged Value set to <i>Multiple</i> does not have the <i>Trigger</i> Tagged Value set.
Business Cycle	Event Schedule	<i>Business Cycles must have Event Nodes defined</i>	A Business Cycle element does not have any Event Nodes defined.
Goal	Business Motivation/ Strategy Map	<i>Goal not realized</i>	A Goal has no relationship defined with other model artifacts.
Strategy	Business Motivation/ Strategy Map	<i>Strategy not realized</i>	A Strategy has no relationship defined with other model artifacts.

4.2 Validation Messages for Connectors

The following error messages could be output by the validation of a Zachman Framework connector.

Connector	Diagram	Message	Meaning
Association	Data Map	<i>DataMap Association must have a valid source element</i>	An Association has a source element other than Principal Entity, Structure Entity or Intersecting Entity.
Association	Data Map	<i>DataMap Association must have a valid target element</i>	An Association has a target element other than Principal Entity, Structure Entity or Intersecting Entity.
Association	Data Map	<i>Possibility of An Intersecting entity < name> which may represent a Potential Business Process exists – This is a warning message.</i>	An Association has a many-to-many relationship, informing that the relationship could be normalized.
Strategy Link	Strategy Map	<i>StrategyMap Association must have a valid source element</i>	A Strategy Link has a source element other than Strategy and Goal.
Strategy Link	Strategy Map	<i>StrategyMap Association must have a valid target element</i>	A Strategy Link has a target element other than Strategy and Goal.

4.3 Validation Messages for Diagrams

The following error message could be output by the validation of a Zachman Framework diagram.

Diagram	Message	Meaning
Data Map	<i>Entities must have relations in DataMap</i>	In the Data Map diagram there are entities with no relationships defined.

Index

- A -

- Access
 - MDG Technology For Zachman Framework 9
- Activity
 - Toolbox Pages 17
- Add-In Menu
 - For Zachman Framework 14

- B -

- BPMN
 - Connectors 23
 - Elements 23
 - Toolbox Pages 23
- Business Data
 - Connectors 18
 - Elements 18
 - Toolbox Pages 18
- Business Events
 - Connectors 21
 - Elements 21
 - Toolbox Pages 21
- Business Location
 - Connectors 19
 - Elements 19
 - Toolbox Pages 19
- Business Logistics
 - Connectors 22
 - Elements 22
 - Toolbox Pages 22
- Business Motivation
 - Connectors 20
 - Elements 20
 - Toolbox Pages 20
- Business Process
 - Connectors 19
 - Elements 19
 - Toolbox Pages 19
- Business Process Modeling Notation 23
- Business Rule Model
 - Connectors 27
 - Elements 27
 - Toolbox Pages 27
- Business Scorecard
 - Generate 36
 - RTF Document 36
 - Templates 36

- C -

- Cells
 - Zachman Framework 11
- Class
 - Toolbox Pages 17
- Cluster
 - Definition 33
 - Phase Number 33
 - Report 33
- Compiled 29 May 2008 2
- Component
 - Toolbox Pages 17
- Connector
 - Validation Messages 41
- Copyright 3

- D -

- Data Definition
 - Connectors 17
 - Elements 17
 - Toolbox Pages 17
- Data Distribution Architecture
 - Connectors 26
 - Elements 26
 - Toolbox Pages 26
- Data Map
 - Connectors 22
 - Elements 22
 - Toolbox Pages 22
- Data Map Analysis
 - Diagram 32
 - Dialog 32
 - Introduction 32
 - Procedure 32
- Data Modeling
 - Toolbox Pages 17
- Deployment
 - Toolbox Pages 17
- Diagram
 - Validation Messages 42
 - Zachman Framework 15
 - Zachman Framework Interface 11
 - Zachman Framework Types 16
- Download
 - MDG Technology For Zachman Framework 9

- E -

Element

Validation Messages 40

Event Schedule

Connectors 25

Elements 25

Toolbox Pages 25

- G -

Getting Started 9

- I -

Install

MDG Technology For Zachman Framework 9

Interaction

Toolbox Pages 17

- L -

License Agreement 4

- M -

MDG Technology For Zachman Framework

Access 9

Copyright 3

Download 9

Getting Started 9

Install 9

License Agreement 4

Support 7

System Requirements 8

Trademarks 6

Using 10

Welcome 2

Model

Structure 12

Template 13

Model Validation

Configuration 38

Error Messages 38

Procedure 38

- N -

Network Architecture

Connectors 28

Elements 28

Toolbox Pages 28

- O -

Organization Chart

Connectors 21

Elements 21

Toolbox Pages 21

- P -

Phase

Number 33

Property 33

Process Analysis

Toolbox Pages 17

Process Map

Definition 34

- R -

Rule Design

Connectors 28

Elements 28

Toolbox Pages 28

Rule Specification

Connectors 29

Elements 29

Toolbox Pages 29

- S -

Security Architecture

Connectors 17

Elements 17

Toolbox Pages 17

Software Product License Agreement 4

State Transition

Toolbox Pages 17

Strategy Map

Connectors 25

Elements 25

Toolbox Pages 25

Support 7

- T -

Tagged Values 30

Tasks

Tasks

- Pane 31
- Zachman Framework 31

Timing

- Toolbox Pages 17

Toolbox Pages

- BPMN 23
- Business Data 18
- Business Events 21
- Business Location 19
- Business Logistics 22
- Business Motivation 20
- Business Process 19
- Business Rule Model 27
- Data Definition 17
- Data Distribution Architecture 26
- Data Map 22
- Event Schedule 25
- For Zachman Framework 17
- Network Architecture 28
- Organization Chart 21
- Rule Design 28
- Rule Specification 29
- Security Architecture 17
- Strategy Map 25

Trademarks 6

- U -

Use Case

- Toolbox Pages 17

User Interface

- Toolbox Pages 17

Using

- MDG Technology For Zachman Framework 10

- V -

Validation Messages

- For Connectors 41
- For Diagrams 42
- For Elements 40

- W -

Welcome

- To MDG Technology For Zachman Framework 2

- Z -

Zachman Framework

- Add-In Menu 14
- Cells 11
- Diagram Types 16
- Diagrams 15
- Interface Diagram 11
- Model Structure 12
- Model Template 13
- Model Validation 38
- Overview 2
- Packages 12, 13
- Tasks 31
- Toolbox Pages 17

MDG Technology For Zachman
Framework User Guide

www.sparxsystems.com